

PNEUMATIC ROTARY SHAMPOER

6" POLISHER

- 3,500 RPM
- Extra Heavy Duty Bearings & Planet Gears
- Side Exhaust Keeps Work Area Clear
- Precision Engineered

**Safety Instructions**

The following instructions are furnished as general guidelines for use of your pneumatic tool. They cannot comprehensively cover all possible or conceivable uses of the subject tool.

For additional information on the safe use of air tools, we advise you to obtain a copy of CAGI B186.1-2009 Safety Code for Portable Air Tools, available from the following source:

COMPRESSED AIR AND GAS INSTITUTE
1300 Sumner Avenue
Cleveland, OH 44115-2851
Ph: 216-241-7333

www.cagi.org OR from
Florida Pneumatic Manufacturing Corp.
851 Jupiter Park Lane
Jupiter, FL 33458

561-744-9500 www.florida-pneumatic.com
The use of the word "shall" in the following instructions, indicates that adherence to the particular requirement is necessary to conform to CAGI B186.1-2009.

Tool Application and Usage

Portable tools shall be used only for the purposes intended in their design and within the capacity for which they were intended and rated. It shall be the tool owner's and/or employer's responsibility to instruct each operator in the safe use of the tool. Tools shall

not be used without guards and safety devices as furnished by the manufacturer. Where an air tool is modified or altered, the modifier shall provide the safeguards to enable it to be safely used in the operations intended and to comply with any applicable provisions as contained in CAGI B186.1-2009 .

Tool Installation

Pressure regulators shall be used to limit air pressure to the rated pressure where the supply pressure exceeds the tool's rated pressure. Air hoses and lines shall be relieved of compressed air before being disconnected or disjointed, unless there is automatic valve closing protection at the joint being separated. Synthetic lubricants which can cause deterioration of elastomer seals shall not be used in air systems of air tools.

Tool Maintenance

It shall be the tool owner's and/or employer's responsibility to assure that tools are maintained in a safe operating condition. Tool maintenance and repair shall be performed by authorized, trained, competent personnel. Tools shall be disconnected from their compressed air supply before repairs are attempted. Repairs shall be consistent with the manufacturer's recommended procedures. Tool, hoses and fittings shall be replaced if unsuitable for safe operation. It shall be the tool owner's and/or employer's responsibility to keep required rating markings and warnings on the tool in legible condition.

Specifications

Pad Size	6" Diameter
Speed	3,500 RPM
Spindle thread size	5/16"-24 Internal; 5/8"-11 External
Weight	2.4bs.
Height	6-1/2"
Average air consumption	10 CFM
Recommended hose size	3/8" ID
Air inlet	1/4" NPT
Maximum operating pressure	90 PSIG

DETAIL PLUS

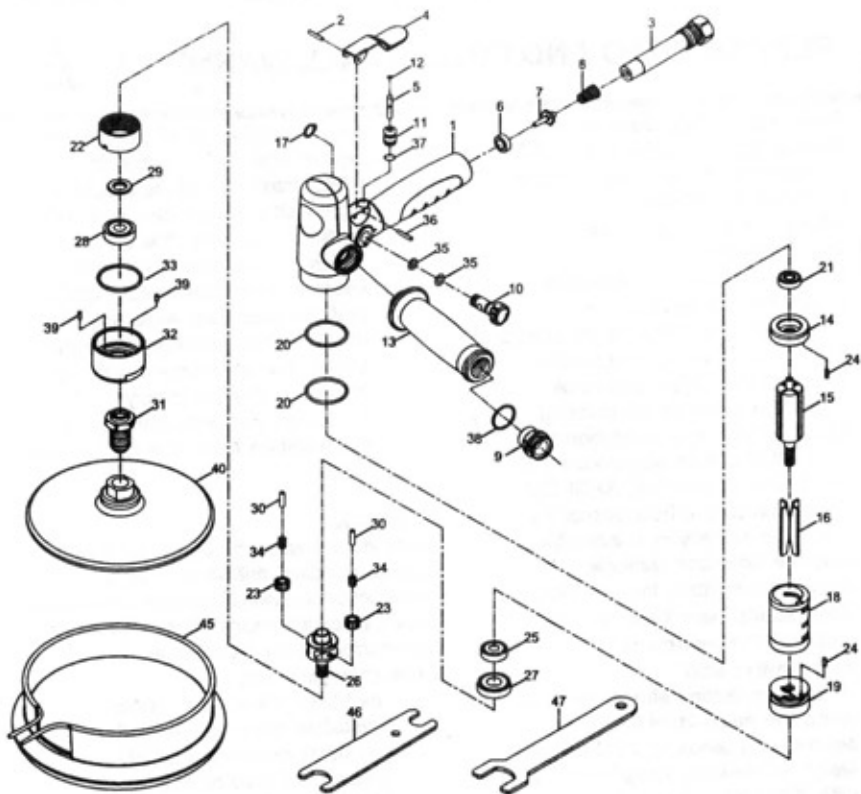
LIMITED 1 YEAR WARRANTY

DETAIL PLUS makes every effort to assure that its products meet high quality and durability standards, and warrants to the original purchaser that this product is free from defects in materials and workmanship for the period of one year from the date of purchase. This warranty does not apply to damage due directly or indirectly to misuse, abuse, negligence or accidentals; repairs or alterations outside our facilities; or to lack of maintenance. We shall in no event be liable for death, injuries to persons or property, or for incidental, contingent, special or consequential damages arising from the use of our product. Some states do not allow the exclusion or limitation of incidental or consequential damages, so the above limitation of exclusion may not apply to you.

To take advantage of this warranty, the product or part must be returned to us with transportation charges prepaid. Proof of purchase date and an explanation of the complaint must accompany the merchandise. If our inspection verifies the defect, we will either repair or replace the product at our election or we may elect to refund the purchase price if we cannot readily and quickly provide you with a replacement. We will return repaired products at our expense, but if we determine there is no defect, or that the defect resulted from causes not within the scope of our warranty, then you must bear the cost of returning the product.

This warranty gives you specific legal rights and you may also have other rights which vary from state to state.

P.O. Box 20755 | Portland, Oregon 97294 | 1-800-284-0123



Ref#	Part No.	Description	Q'ty	Ref#	Part No.	Description	Q'ty
1	96N-663601	Motor Housing	1	24	961046	Spring Pin	2
2	940317	Spring Pin	1	25	9030120	Ball Bearing	1
3	96N-663603	Air Inlet	1	26	96N-663626	Idler Planet Cage	1
4	96N-663604-28	Throttle Lever	1	27	9060313	Ball Bearing	1
5	96N-663605	Valve Shaft	1	28	9051220	Ball Bearing	1
6	975-725145	Rubber Spacer	1	29	96N-663629	Spacer	1
7	975-725146	Valve Stem	1	30	930124	Pin	2
8	973108	Valve Spring	1	31	96P-663631	Spindle	1
9	96N-663609	Silencer	1	32	96N-663632	Front Cap	1
10	96N-663610	Air Regulator Knob	1	33	96N-663633	Decoration Ring	1
11	96N-663611	Bushing	1	34	9070428	Needle Bearing	2
12	90R00200100	O-Ring	1	35	90R00600200	O-Ring	2
13	96N-663643	Side Handle	1	36	95P02001200	Spring Pin	1
14	96N-663614	Rear End Plate	1	37	972804	O-Ring	1
15	96N-663615	Rotor	1	38	9795820	O-Ring	1
16	96N-663616	Rotor Blade	4	39	972017	Spring Pin	2
17	960319	Retaining Ring	1	40	96P-663639	Pad	1
18	96N-663618	Cylinder	1				
19	96N-663619	Front End Plate	1				
20	90R03203108	O-Ring	2				
21	9030113	Ball Bearing	1				
22	96N-663622	Internal Gear	1	45	5426	Bonnet	1
23	96N-993623	Idler Gear	2	46	951288	Spanner	1
				47	9610145	Spanner	1



PLEASE READ AND FOLLOW ALL WARNINGS



Read Operating Instructions
Always become familiar with all the instructions and warnings before operating any power tool.



Always Wear Approved Eye Protection

Impact resistant eye protection should meet or exceed the standards as set forth in the United States ANSI Z87.1, Occupational and Educational Eye and Face Protection. Look for the marking Z87.1 on your eye protection to insure that it is an approved style. For further information, ANSI Z87.1, Occupational and Educational Eye and Face Protection, is available from the American National Standards Institute, Inc., 11 West 42nd Street, New York, NY 10036.



Hearing Protection is Recommended

Hearing protection should be used when the noise level exposure equals or exceeds an 8 hour time-weighted average sound level of 85 dBA. Process noise, reflective surfaces, other tools being operated nearby, all add to the noise level present in your work area. If you are unable to determine your noise level exposure, we recommend the use of hearing protection.



Avoid Prolonged Exposure to Vibration

Tools can vibrate during use. Prolonged exposure to vibration or very repetitive hand and arm movements, can cause injury. Stop using any tool if discomfort, tingling feeling or pain occurs. You should consult your physician before resuming use of the tool.



90 PSIG Maximum
This tool is designed to operate at

an air pressure of 90 pounds per square inch gauge pressure (90 PSIG) maximum, at the tool. Use of higher air pressure can, and may cause injury. Also, the use of higher air pressure places the internal components under loads and stresses they were not designed for, causing premature failure. The air supply should be clean and dry, preferably lubricated. For best results, drain the moisture from your compressor daily.

WARNING:

Some dust created by power sanding, sawing, grinding, drilling, and other construction activities contains chemicals known to cause cancer, birth defects or reproductive harm. Some examples of these chemicals are:

- Lead from lead-based paints
- Crystalline silica from bricks, cement and other masonry products
- Arsenic and chromium from chemically treated lumber

Your risk from these exposures varies, depending on how often you do this type of work. To reduce your exposure to these chemicals, work in a well-ventilated area and work with approved safety equipment such as those dust masks that are specially designed to filter out microscopic particles.

